



INSTRUCCIONES DE MONTAJE / ASSEMBLY INSTRUCTIONS / INSTRUCCIONS DE MONTAGE / INSTRUÇÕES DE MONTAGEM

**LA PALETA/THE PALETTE/LA PALETTE**

JCF09



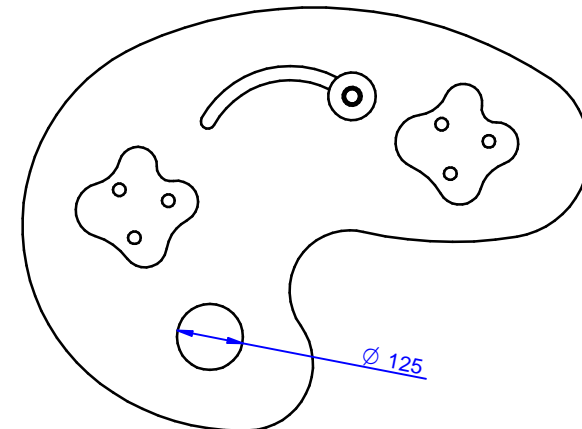
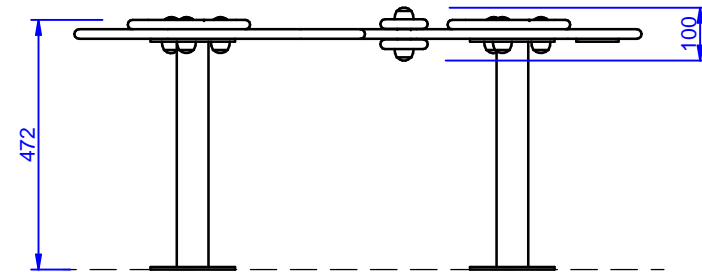
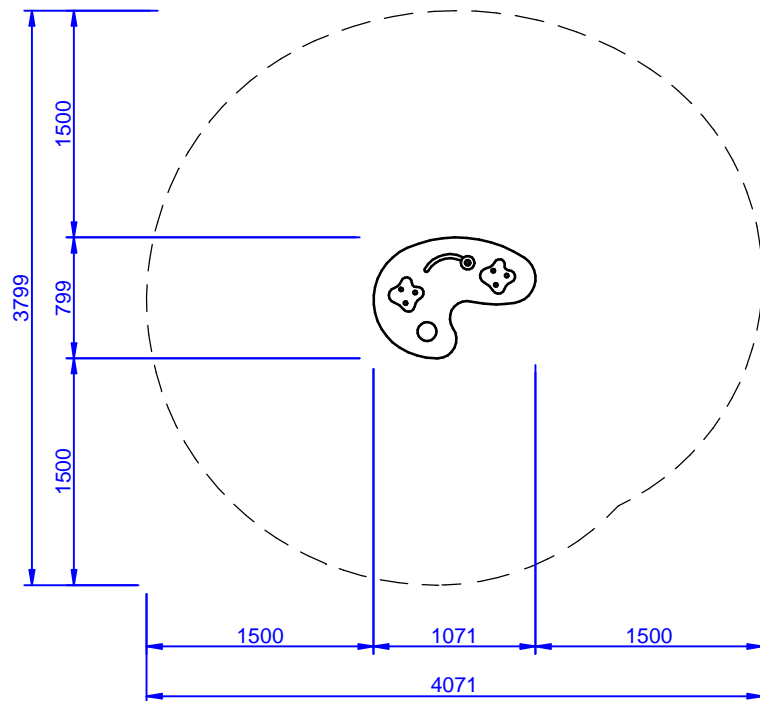


INSTRUCCIONES DE MONTAJE / ASSEMBLY INSTRUCTIONS / INSTRUCCIONS DE MONTAGE / INSTRUÇÕES DE MONTAGEM

LA PALETA/THE PALETTE/LA PALETTE

JCF09

H = 0,47 m.  
 S = 12 m<sup>2</sup>





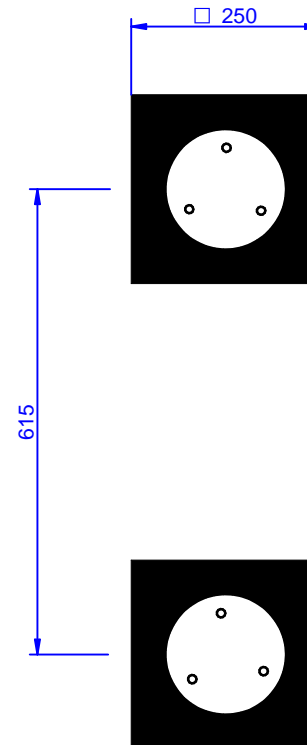
## INSTRUCCIONES DE MONTAJE / ASSEMBLY INSTRUCTIONS / INSTRUCCIONS DE MONTAGE / INSTRUÇÕES DE MONTAGEM

## LA PALETA/THE PALETTE/LA PALETTE

JCF09

**SB**

AGUJERO PARA POSTE  
HOLE FOR POST  
TROU POUR LE POTEAUX



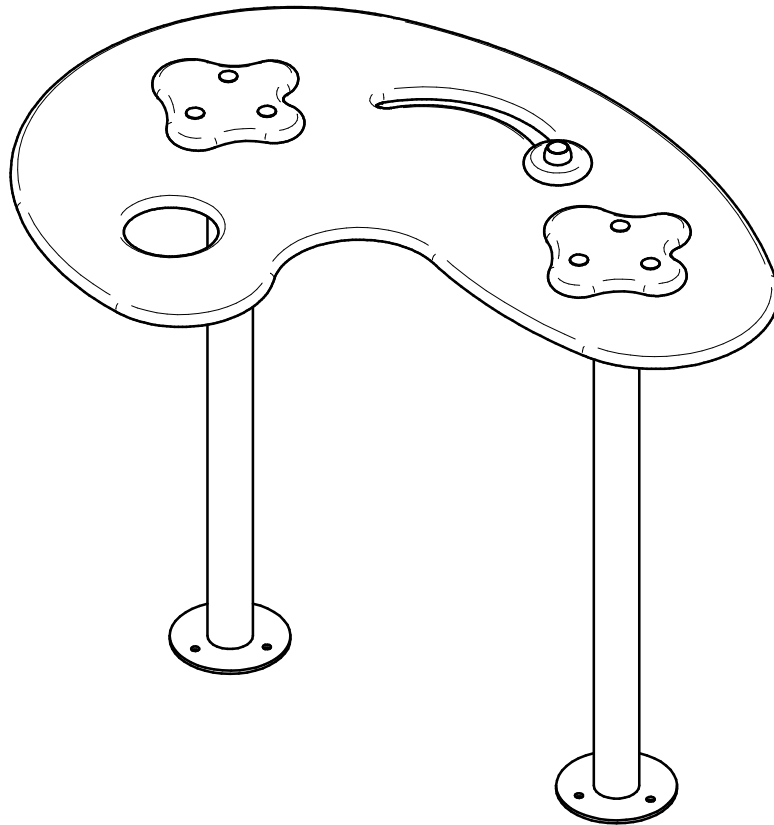


## INSTRUCCIONES DE MONTAJE / ASSEMBLY INSTRUCTIONS / INSTRUCCIONS DE MONTAGE / INSTRUÇÕES DE MONTAGEM

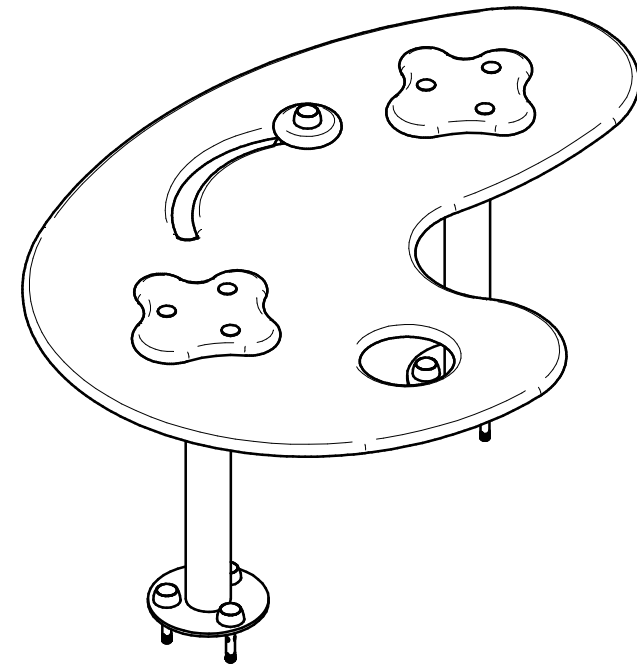
## LA PALETA/THE PALETTE/LA PALETTE

JCF09

SB



SD

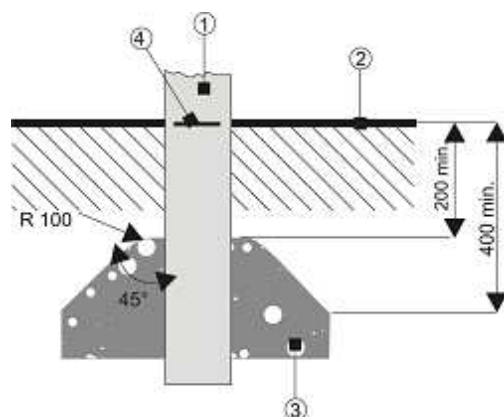
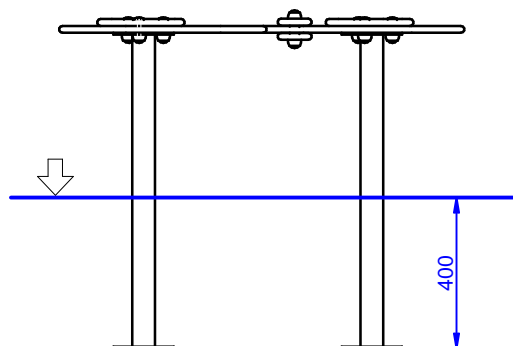



**INSTRUCCIONES DE MONTAJE / ASSEMBLY INSTRUCTIONS / INSTRUCCIONS DE MONTAGE / INSTRUÇÕES DE MONTAGEM**
**LA PALETA/THE PALETTE/LA PALETTE**

JCF09

# SB

Enterrar hasta la flecha  
Bury up to the arrow mark  
Enterrez juste a la fleche



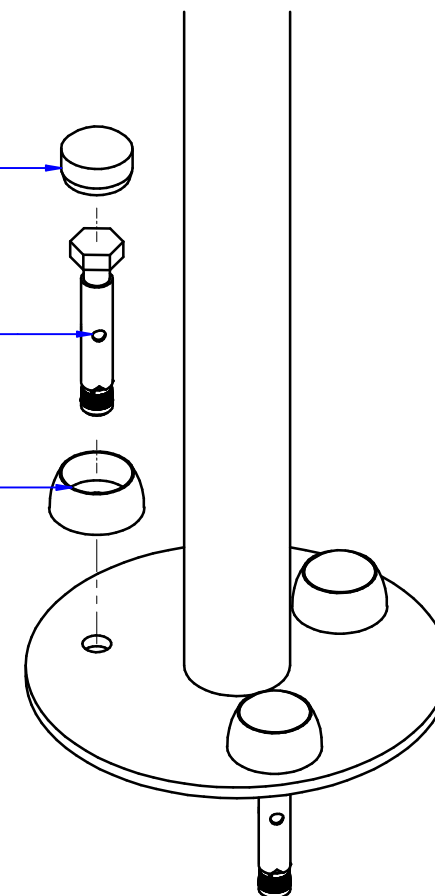
- 1.-Poste/post/poteaux
- 2.-Superficie del juego/área covered by equipment/aire de jeux.
- 3.-Parte superior de los cimientos/cement postfor anchorage/cote superior de betonage
- 4.-Marca de la línea de suelo/ground level mark/marque de la ligne du sol

# SD

Tapon donut negro

Anclaje W-HA 10x70 (speed)

Donut negro





## INSTRUCCIONES DE MONTAJE / ASSEMBLY INSTRUCTIONS / INSTRUCCIONS DE MONTAGE / INSTRUÇÕES DE MONTAGEM

## LA PALETA/THE PALETTE/LA PALETTE

JCF09

TORNILLO C PLANA M10x55 DIN603

Donut negro

ARANDELA M10 DIN125

TUERCA M10 DIN934

Tapon donut negro

