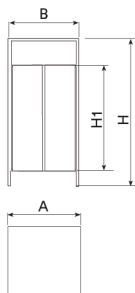
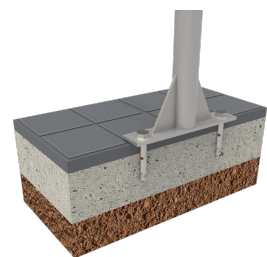




Litter bin made of 6mm Corten steel structure, pine wood treated in vacuum pressure autoclave Class IV against woodworm, termites and insects. Galvanised steel inner bin.
Recommended anchoring: by means of expansion bolts, depending on the surface and the project.



Ref.	A	B	H	H1
PA611	440	460	1000	670



[Project sheet](#) | [CAD](#) | [Catalogue](#) | [Mounting instructions](#) | [HD image](#)